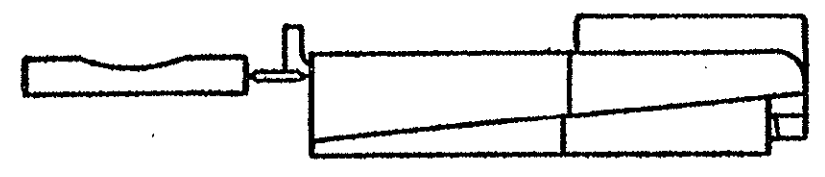


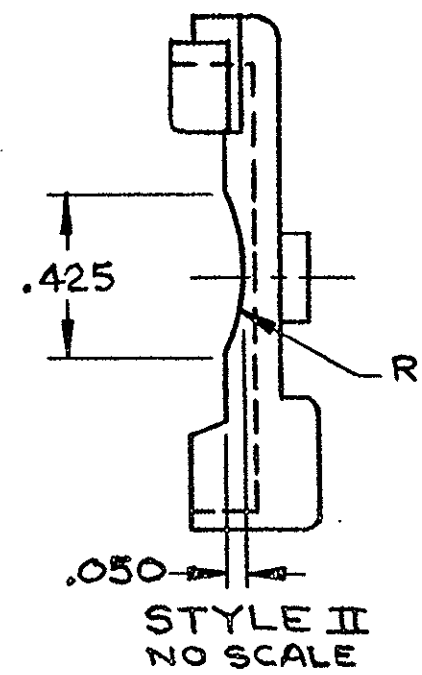
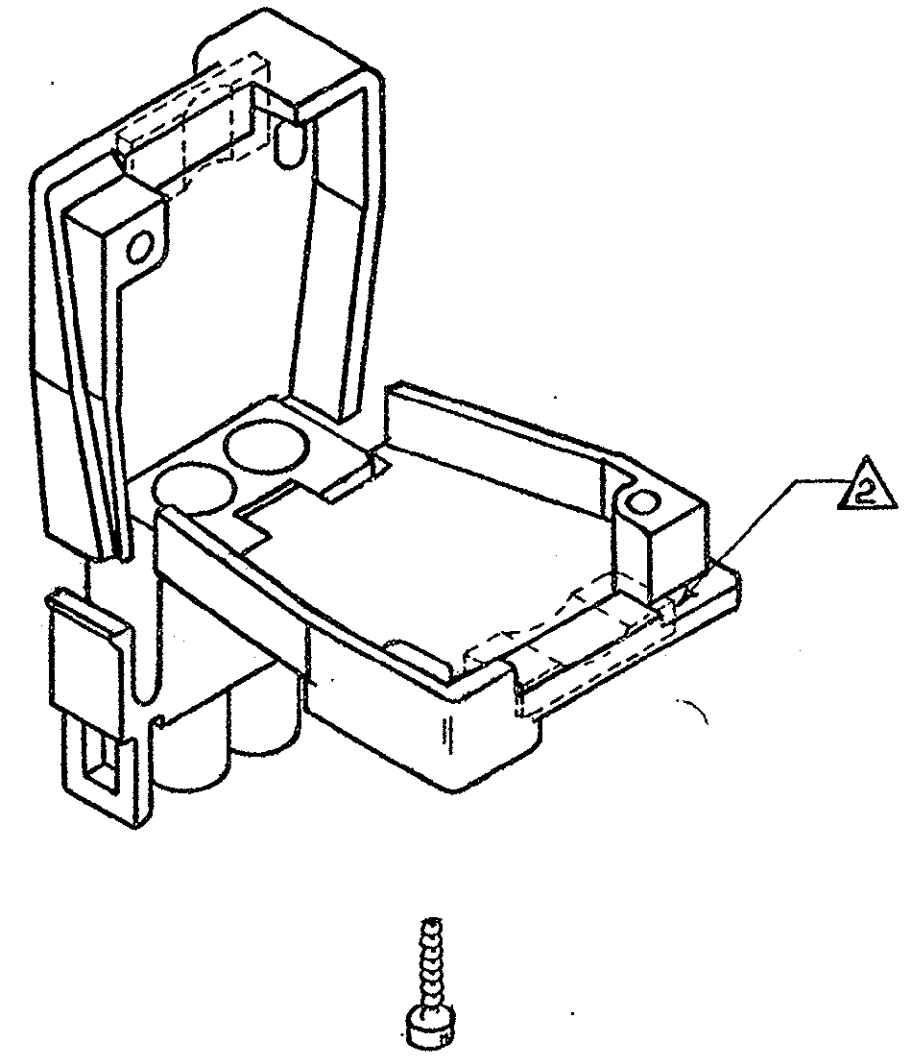
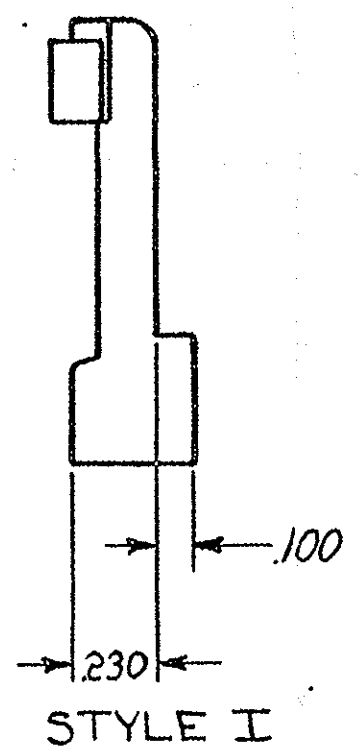
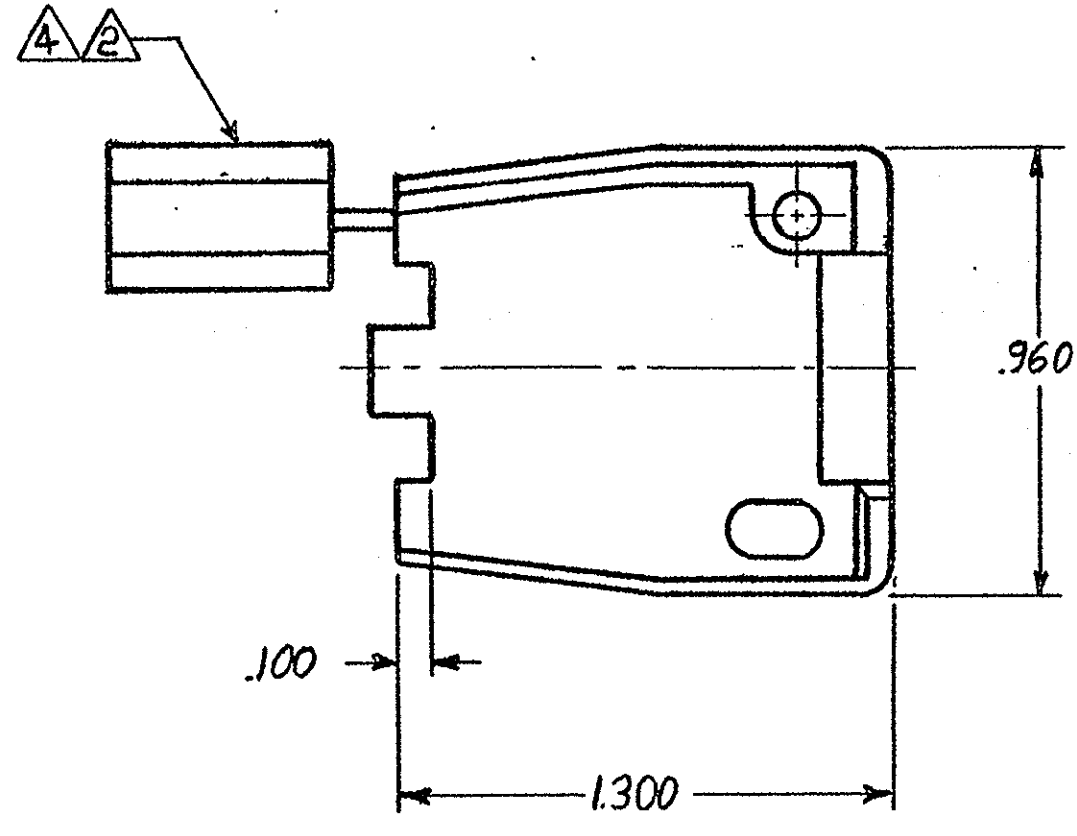
© COPYRIGHT 19 78 BY AMP INCORPORATED, HARRISBURG, PA.
 ALL INTERNATIONAL RIGHTS RESERVED. AMP INCORPORATED PRODUCTS
 COVERED BY U. S. AND FOREIGN PATENTS AND/OR PATENTS PENDING.

REVISIONS					
P	F	ZONE	LTR	DESCRIPTION	DATE APPROVED
			D	REV PER EC 0730-0201-94	4-25-95 JH RS

- ① SHEET METAL SCREWS NOT SUPPLIED.
- ② INSERT IS ATTACHED TO STRAIN RELIEF AS AN ADDITIONAL ADJUSTMENT FOR SMALL WIRE BUNDLES, IT SHOULD BE CUT OFF AND POSITIONED AS SHOWN BY DOTTED LINES.
- ③ TWO REQUIRED PER CONNECTOR.
- ④ STYLE II DOES NOT INCLUDE INSERT.
- 5. DETACHABLE INSERT MAY SEPARATE FROM STRAIN RELIEF BODY DURING SHIPPING.



(2 REQ'D) #6 x .375 LG. TYPE "B" PAN HEAD SHEET METAL SCREW ①



WIRE BUNDLE	
WITHOUT INSERT	MAX 2 @ .190 DIA
WITH INSERT	MIN 2 @ .040 DIA

UNLESS OTHERWISE SPECIFIED DIMENSIONS ARE IN INCHES.
 TOLERANCES ON:
 DECIMALS ± .015
 ANGLES ± .015

MATERIAL: SEE TABLE

FINISH: SEE TABLE

CONTRACT NO: CERISMAN 10-25-78

DR: D.S. Heide 11/1/78

CHK: J.C.M. 11-1-78

APPD: [Signature]

DSGN APPD: [Signature]

OTHER APPD: [Signature]

STYLE	MATERIAL	PART NO
II	NYLON 94V-0	640713-2
I	NYLON 94V-0	640713-1

AMP AMP INCORPORATED Harrisburg, Pa.

NAME: STRAIN RELIEF AND INSERT, 2 CIRCUIT, UNIVERSAL MATE-N-LOK™

SIZE: C CODE IDENT NO: 00779 DRAWING NO: 640713

SCALE: NTS SHEET 1 OF 1

D-0651E-883 SW-2-

640713